

PP1069 Practice drum kit user manual

Step 1. Kit contains:

- 1 x single pedal
- 1 x pedal beater
- 5 x pad
- 3 x stand
- 1 x link bar for toms pads
- 1 x L type bar

Please note that bass pad has different thread to other 4 pads.

Bass pad with 8mm thread

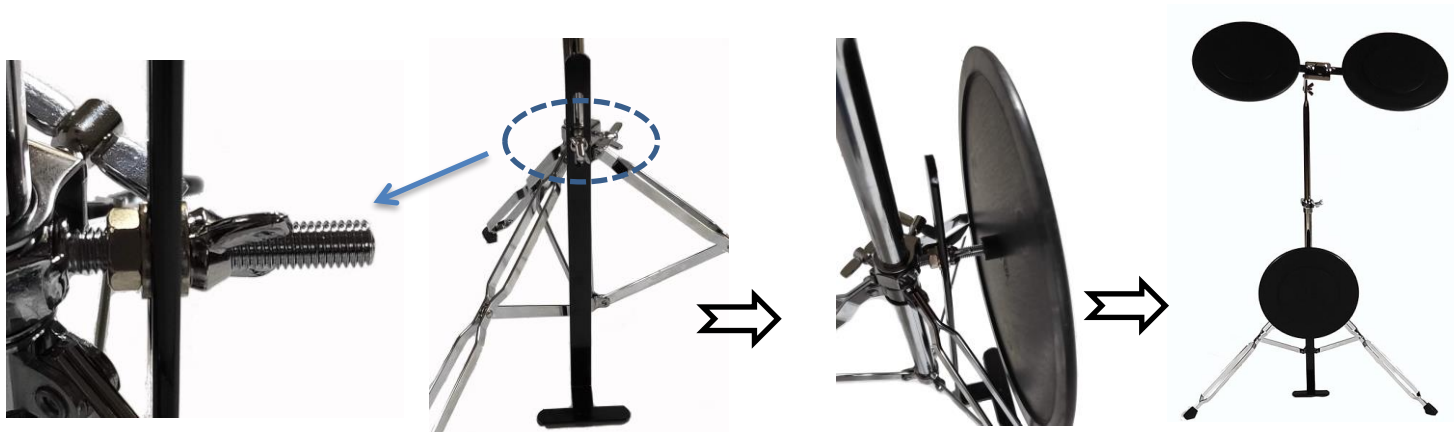


Step 2. To assemble stands:

Connect the upper parts with tripod stand base of stand 1 and attach the tom pads & bass pad.



Please release the nuts and washers from tripod stand base, to put in L type bar, then set up the bass pad at the bottom. Remember, the bass pad is the round pad with 8mm thread. Make sure the bass pad is tightly secured.



Step 3. Connect the upper parts of stand 2 with tripod stand base. Repeat for stand 3.



Step 4. Set up the pedal.



Step 5. Place stand 2 and stand 3 either side of stand 1.
You may need to adjust the height and angle of pads for playing comfort.



Assembled practice drum kit.