

Thanks for choosing this keyboard stand.



Step 1:  
Open the box and find all the parts about this stand.



Step2:  
Assemble this left leg with left L base with the attached bolt.



Step 3:  
Assemble this right leg with right L base with the attached bolt.



Step 4: Connect the left leg and right leg with the tube as below.



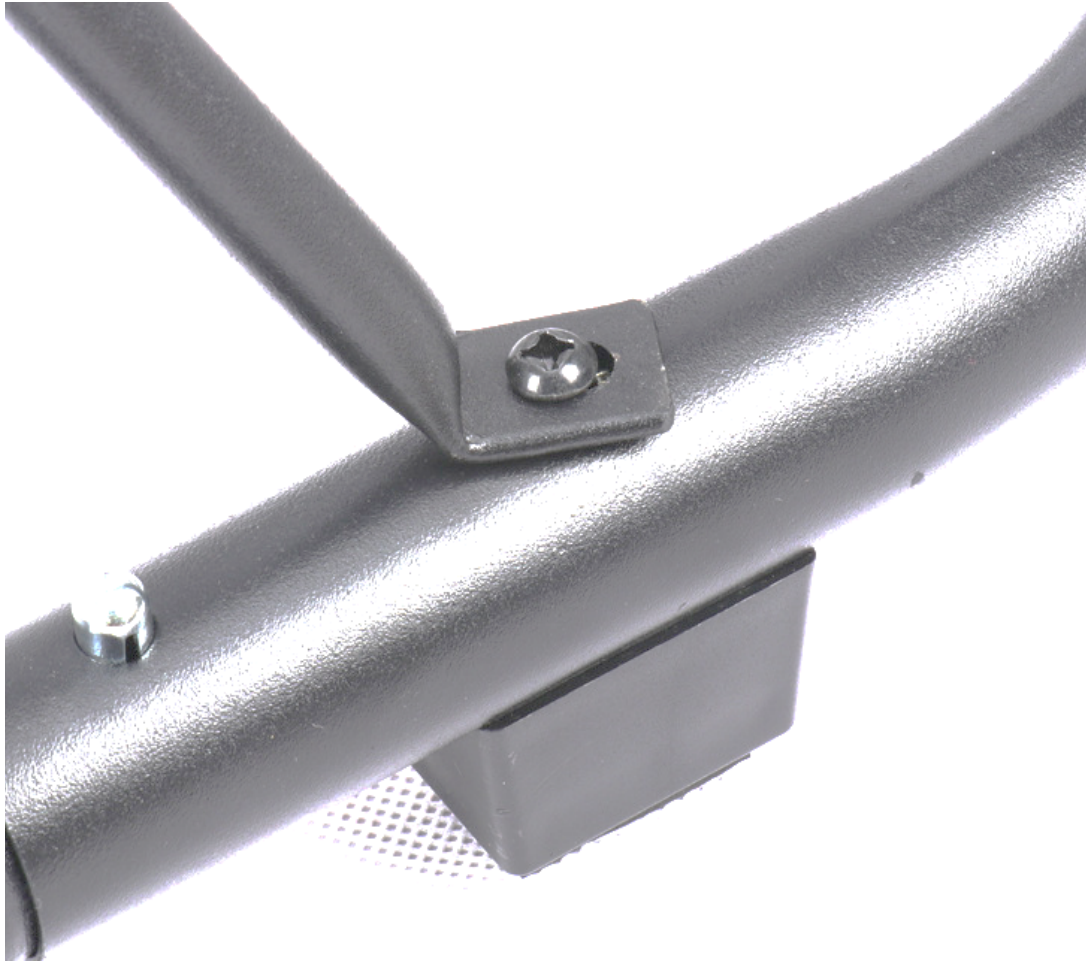
Step 5. Connect the top U rube with two legs on the top.





Step 6. Connect two supports between the top U tube and base tube.

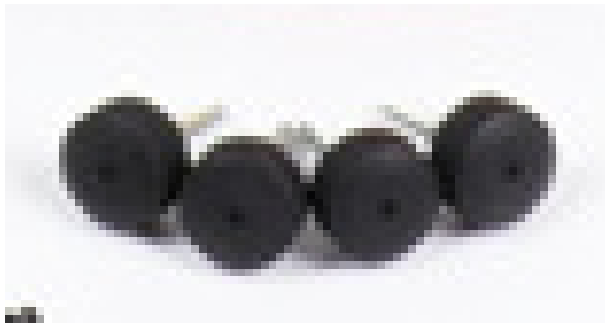




Step 7. Connect two rubber straps with the knobs.







Step 8. Tighten all the bolts and knobs now the stand is ready to use. Connect the straps with the knobs to the bottom holes of the keyboard to secure the keyboard from falling.

